

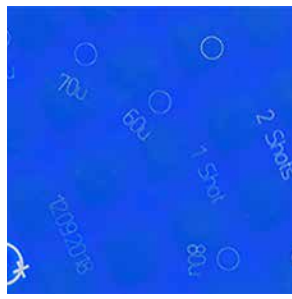


# Lens-Engraver-EC-2

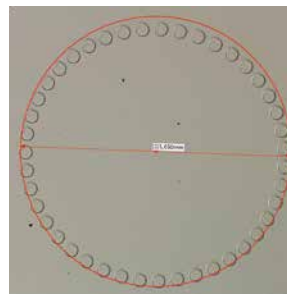
PREMIUM LENS ENGRAVING EXCIMER TECHNOLOGY



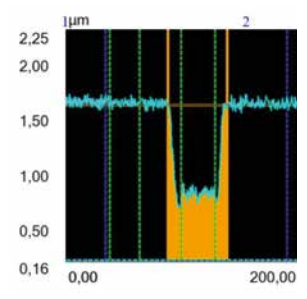
Functional engravings



Easy to use Satisloh LensMark RX interface software



1,6 mm circle formed by 60 μm dots



Cross section of single 60 μm dot

## LENS-ENGRAVER-EC-2

An innovative laser solution that engraves semi-visible markings on all lens materials. With its unique marking flexibility and quality engraving, it sets a new standard.

## FEATURES + BENEFITS

- Excimer laser with 193 nm wavelength, engraves premium quality markings on all organic and mineral glass lens materials.
- Fully automatic process control and stability ensures repeatable and outstanding engraving results- 24/7.
- Advanced laser causes no thermal stress, micro-cracks, or coating delamination.
- Short engraving times- less than 3 seconds per design.
- Outstanding lens marking on tinted lenses.
- Easily integrated into existing LMS systems and any production environment.
- Modular replacement parts for easy servicing and minimized downtime.
- Automated loading with conveyor system.
- Latest laser source technology for low process gas consumption and service cycles.

## OPTIONS

- Conveyor height and conveyor direction.

## TECHNICAL SPECIFICATIONS

<b>Laser</b>	Excimer laser 193 nm
<b>Productivity</b>	up to 215 lenses/hour (valid for 1100 shots per job)
<b>Marking field</b>	100 mm x 100 mm, Focus depth ±0.5 mm
<b>Lens material</b>	All standard organic and mineral materials
<b>Processing gas</b>	20 Liter premix
<b>Dimensions (wxdxh)</b>	1380 x 1003 x 1837 mm/ +conveyor 54 x 39 x 72 inches
<b>Weight</b>	500 kg / 1102 lbs
<b>Energy requirements</b>	230 VAC/110V (USA), 10A, 50/60 Hz



All technical data subject to change without notice. Verify details with Satisloh.

## CONTACT

**Satisloh AG**  
Neuhofstrasse 12  
CH- 6340 Baar  
Switzerland  
Phone: +41 (0) 41766 16 16  
email: info@satisloh.com

www.satisloh.com

### North America

### Europe

### Asia

### Central & South America

**Sales**  
**Phone:** +1 262 255 6001  
**Email:** info.usa@satisloh.com  
**Phone:** +49 (0) 6441 912 0  
**Email:** info.de@satisloh.com  
**Phone:** +852 27 56 7711  
**Email:** info.asia@satisloh.com  
**Phone:** +55 11 2930 8600  
**Email:** info.latam@satisloh.com

**Service**  
**Phone:** +1 262 255 6001  
**Email:** service.usa@satisloh.com  
**Phone:** +49 (0) 6441 912 222  
**Email:** service.de@satisloh.com  
**Phone:** +852 27 56 7654  
**Email:** service.asia@satisloh.com  
**Phone:** +55 11 2930 8600 (pt)  
**Phone:** +57 300 798 3374 (es)  
**Email:** service.latam@satisloh.com

**satisloh**®